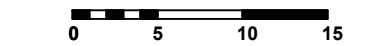
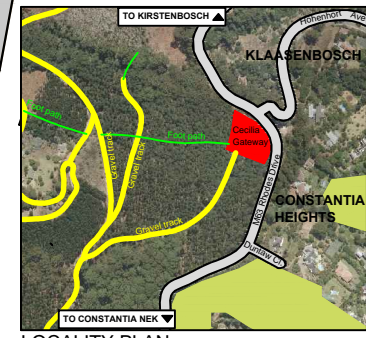


- SPECIES LIST**
- Plants to be selected from the following:
- Trees & shrubs for edge zone:**
Apodytes dimidiata subsp. *dimidiata* (White Pear)
Buddleja salviifolia (Sagewood)
Canthium inerme (Common turkey berry)
Diospyros glabra (Blueberry bush)
Diospyros whyteana (Bladder nut)
Euclea racemosa (Sea guarri)
Halleria lucida (Tree fuschia)
Kiggelaria africana (Wild Peach)
Mauroecnia frangularia (Hottentot's cherry)
Maytenus acuminata var. *acuminata* (Silky bark)
Ocotea bullata (Stinkwood)
Olea capensis subsp. *macrocarpa* (Ironwood)
Olea europea subsp. *africana* (Wild Olive)
Olinia ventosa (Hard pear)
Podalyria calyptata (Sweet pea bush)
Podocarpus latifolius (Real yellowwood)
Rapanea melanophloeos (Cape beech)
Rhus lucida (Glossy currant)
- Trees for car park area:**
Celtis africana (White stinkwood)
Curtisia dentata (Assegai)
Diospyros whyteana (Bladder nut)
Maytenus heterophylla (Common spike thorn)
Olea europea subsp. *africana* (Wild Olive)
Podocarpus latifolius (Real yellowwood)
Virgilia oroboides (Keurboom)
- Groundcovers for general stabilisation:**
Agapanthus spp.
Aristea spp.
Chasmanthe aethiopica
Coleonema album
Eriocephalus africana
Gazania rigens var. *uniflora*
Leonotus leonorus
Plectranthus spp.
Salvia spp.
Watsonia spp.
Zantedeschia aethiopica
- Shrubs for screening and edge area:**
Brabejum stellatifolium (Wild almond hedge)
Halleria lucida (Tree fuschia)
Podalyria calyptata (Water blossom pea)
Rhus lucida (Glossy currant)
Tarhonanthus camphoratus (Camphor bush)
- Rehabilitation of Afromontane Forest

- KEY**
- Scenic Drive - Rhodes Drive
 - Possible gate
 - 417msq Possible formalised parking for 20 vehicles outside re-instated car park area
 - Gravel track
 - Possible male and female toilets
 - Existing footpath through Afromontane Forest to remain
 - Disused water reservoir with new bench located on top of reservoir, serving as a viewing platform
 - KEY TO EXISTING PLANTING
 - Eucalyptus spp. trees
 - Podocarpus falcatus trees
 - Quercus spp. trees
 - Existing grass areas
 - Key to new planting - refer to species list
 - Re-instated car park area
 - Scope of Work Line
Possible Additional Improvements

POSSIBLE ADDITIONAL PARKING AREA OUTSIDE RE-INSTATED CAR PARK AREA = 20 No. BAYS

DATE	DRAWN	CHECKED	DESCRIPTION
CECILIA GATEWAY			
SKETCH PLAN RE-INSTATEMENT AND LANDSCAPING OF EXISTING CAR PARK: POSSIBLE ADDITIONAL IMPROVEMENTS			
PROJECT NO	DISCIPLINE	DWG NO	STAGE
CEC 001	L	003	S
SCALE	DATE	REV	
1:200	17 JAN 2011	A1	E
COPYRIGHT RESERVED			
CLARE C A BURGESS <small>LANDSCAPE ARCHITECTURE ENVIRONMENTAL & PERMACULTURE DESIGN 12 KIERT ROAD NEWLANDS 7800 CAPE TOWN TEL & FAX (021) 671 2332 e-mail: clareb@telkomsa.net</small>			



SKETCH PLAN
RE-INSTATEMENT AND LANDSCAPING OF EXISTING CAR PARK: POSSIBLE ADDITIONAL IMPROVEMENTS